



AUSTRALIAN LOT FEEDERS' ASSOCIATION

## MEDIA RELEASE

[Read online](#)

27 November 2025

# Australian grain fed beef sector maintains strength with record capacity and exports

- **Numbers of cattle on feed in Australia remain above 1.5 million head**
- **Feedlot capacity continues to grow**
- **Feedlot quarterly turn off approaches 1 million head**

The Australian lot feeding sector continues to go from strength-to-strength with numbers of cattle on feed exceeding 1.5 million head and capacity breaking 1.7 million head for the first time, according to the September 2025 quarterly feedlot survey published by the Australian Lot Feeders' Association (ALFA) and Meat & Livestock Australia (MLA).

National feedlot capacity climbed by 2.5% compared to the June quarter, reaching a new high of 1,749,170 head.

This growth reflects ongoing confidence and investment in the sector, with Queensland and New South Wales leading the charge. Queensland feedlots are now edging closer to the one million head milestone, with capacity at 971,857 head, while NSW recorded a significant 7% increase.

Grant Garey, ALFA President, said this expansion is a clear signal of the industry's resilience and commitment to meeting global demand.

"The continued growth in feedlot capacity is not just a number, it's a reflection of the confidence lot feeders have in the grain fed production system," Mr Garey said.

"Despite the challenges of rising input costs and market volatility, operators are investing in infrastructure and technology to ensure we can deliver consistent, high-quality beef to both domestic and international customers.

"This level of investment underpins the sector's long-term sustainability and its critical role in the Australian beef supply chain."

Turnoff also hit a record, with 962,436 head processed during the quarter. Strong lifts in Queensland (+5%) and NSW (+22%) drove this result, underscoring the sector's ability to meet demand even as feedlots moderated cattle placements following last quarter's record utilisation of 93%.

Numbers on feed eased by 3.9% to 1,518,289 head as feedlots regulated throughput yet remain 7% higher than the same period last year. Utilisation sits at 87%, well above the 10-year average of 81%, highlighting the sector's sustained efficiency.

Exports of grain fed beef surged to a record 121,157 tonnes, up 7% on the previous quarter and accounting for 29% of total beef exports. China led the way with 40,625 tonnes (+3%), representing 34% of grain fed exports, while shipments to Japan and Korea both rose by 8%. Growth was also recorded across diversified markets beyond the top three destinations.

Erin Lukey, MLA Senior Market Information Analyst, said the export performance reinforces the global appetite for Australian grain fed beef.

"Grain fed exports remain essential in Australia's beef trade, and this quarter's record volumes highlight the strength of demand across key markets," Ms Lukey said.

"China continues to be a major driver, but what's equally important is the growth we're seeing in Japan, Korea and emerging destinations. This diversification is critical for long-term industry resilience.

"Even with feeder steer prices lifting 18% during the quarter, easing grain prices have provided some relief, helping lot feeders maintain competitiveness in a challenging cost environment."

**ENDS.**

**Media Enquiries:**

Jack Johnston  
MLA Corporate Affairs and Media Manager  
[media@mla.com.au](mailto:media@mla.com.au)  
0407 282 971

Grant Garey  
ALFA President  
[info@feedlots.com.au](mailto:info@feedlots.com.au)  
(02) 9290 3700

## NUMBERS ON FEED

Quarter	NSW	VIC	QLD	SA	WA	Total
Sep-25	468,419	63,828	884,877	55,790	45,375	1,518,289
Jun-25	471,767	72,170	893,280	71,072	70,886	1,579,175
Sep-24	397,342	59,762	829,198	75,697	62,393	1,424,392

## TURNOFF

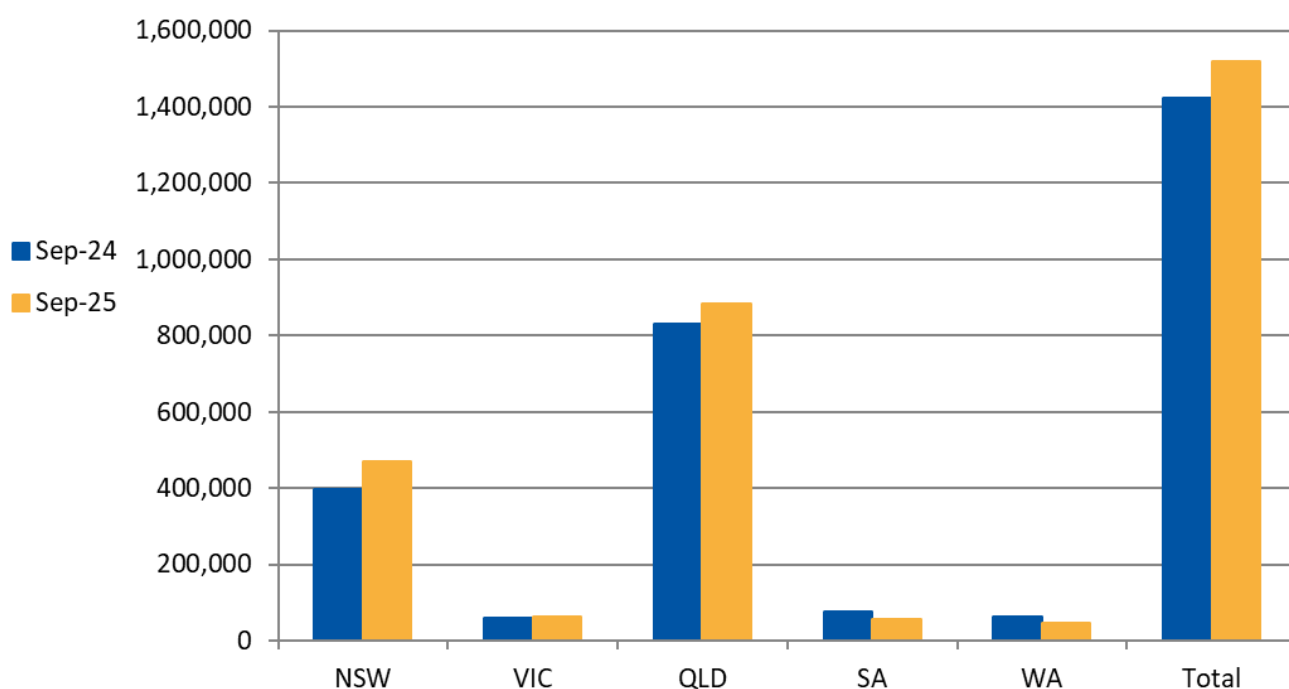
Quarter	NSW	VIC	QLD	SA	WA	Total
Sep-25	269,946	35,739	564,893	39,636	52,222	962,436
Jun-25	220,841	40,831	537,548	46,349	48,609	894,178
Sep-24	227,883	39,869	499,834	46,690	45,654	859,930

## CAPACITY

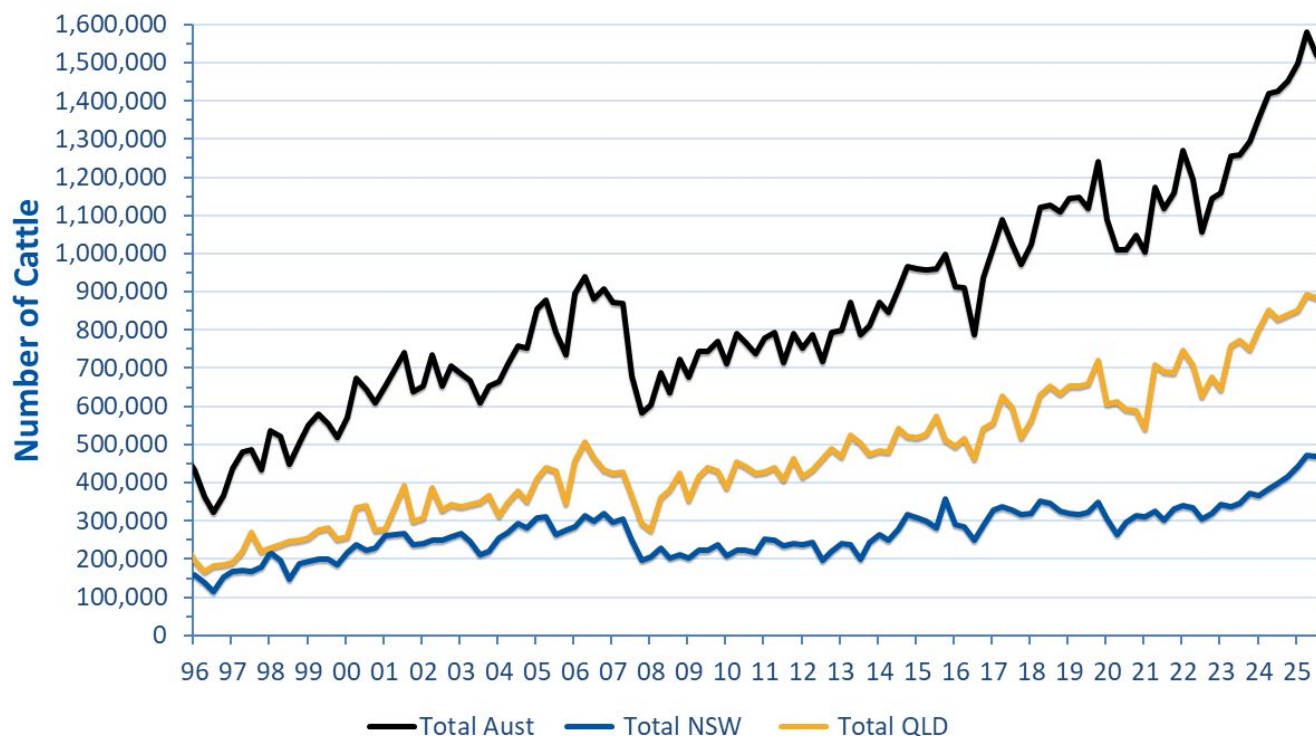
Quarter	NSW	VIC	QLD	SA	WA	Total
Sep-25	527,193	83,622	971,857	75,084	91,414	1,749,170
Jun-25	494,396	86,196	957,648	77,618	90,414	1,706,272
Sep-24	471,340	84,575	918,874	79,215	89,614	1,643,618

**Source:** Feedlot Capacity figures are provided by AUS-MEAT Limited (AUS-MEAT). AUS-MEAT owns and administers the National Feedlot Accreditation Scheme (NFAS) on behalf of ALFA and the feedlot sector. Actual Feedlot Capacity figures are reported under the NFAS.

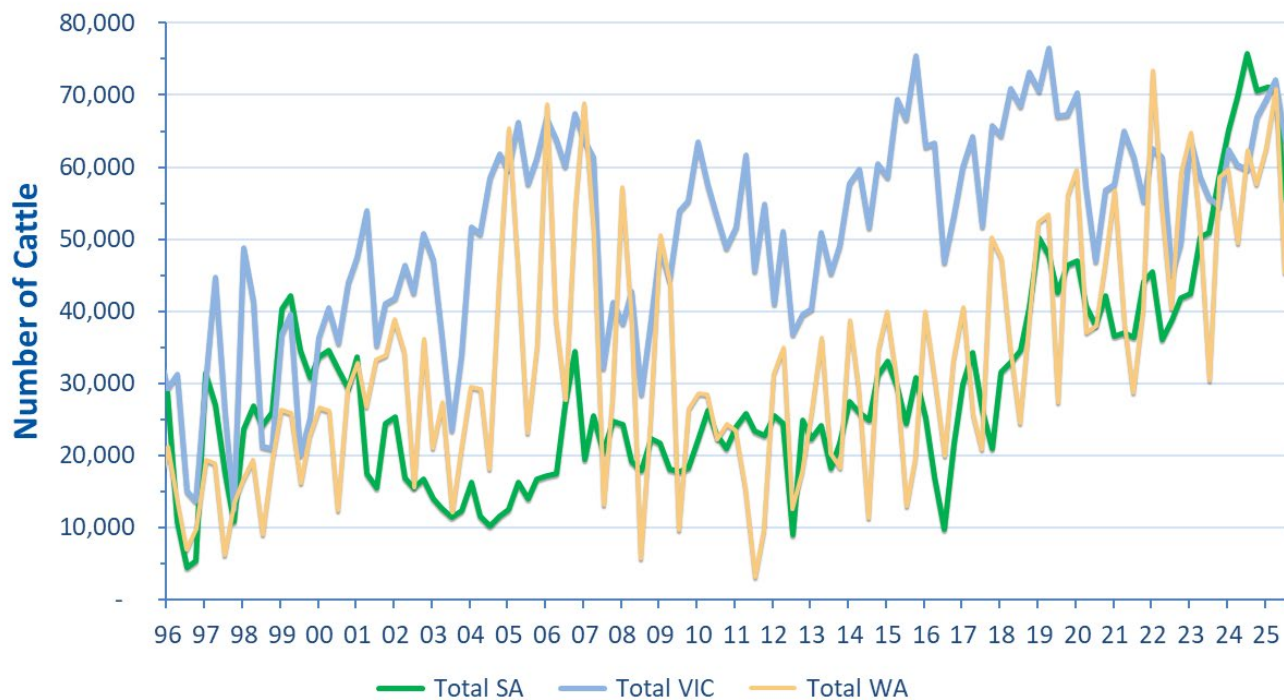
## NUMBERS ON FEED YoY



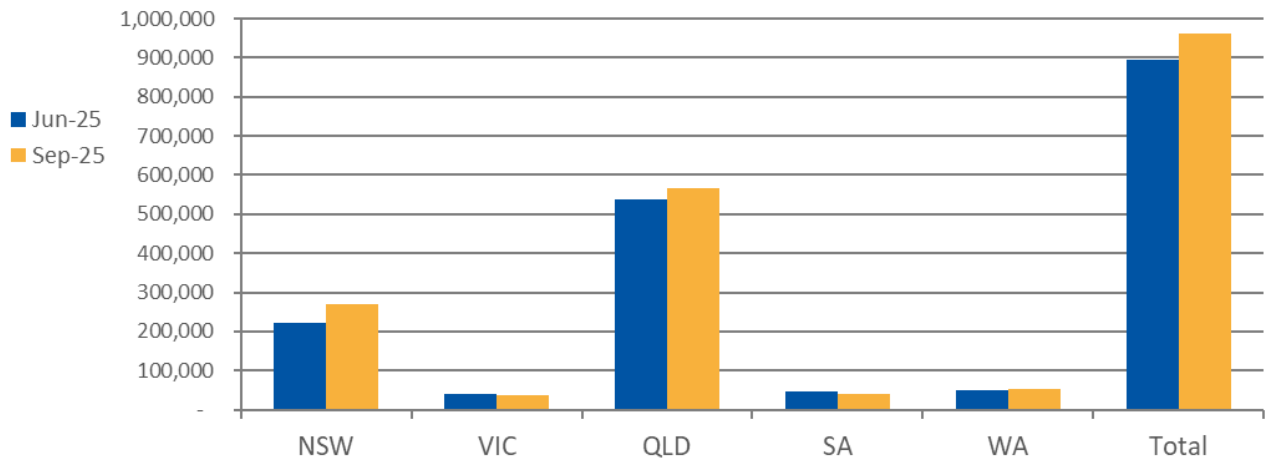
## CATTLE NUMBERS ON FEED - HISTORIC



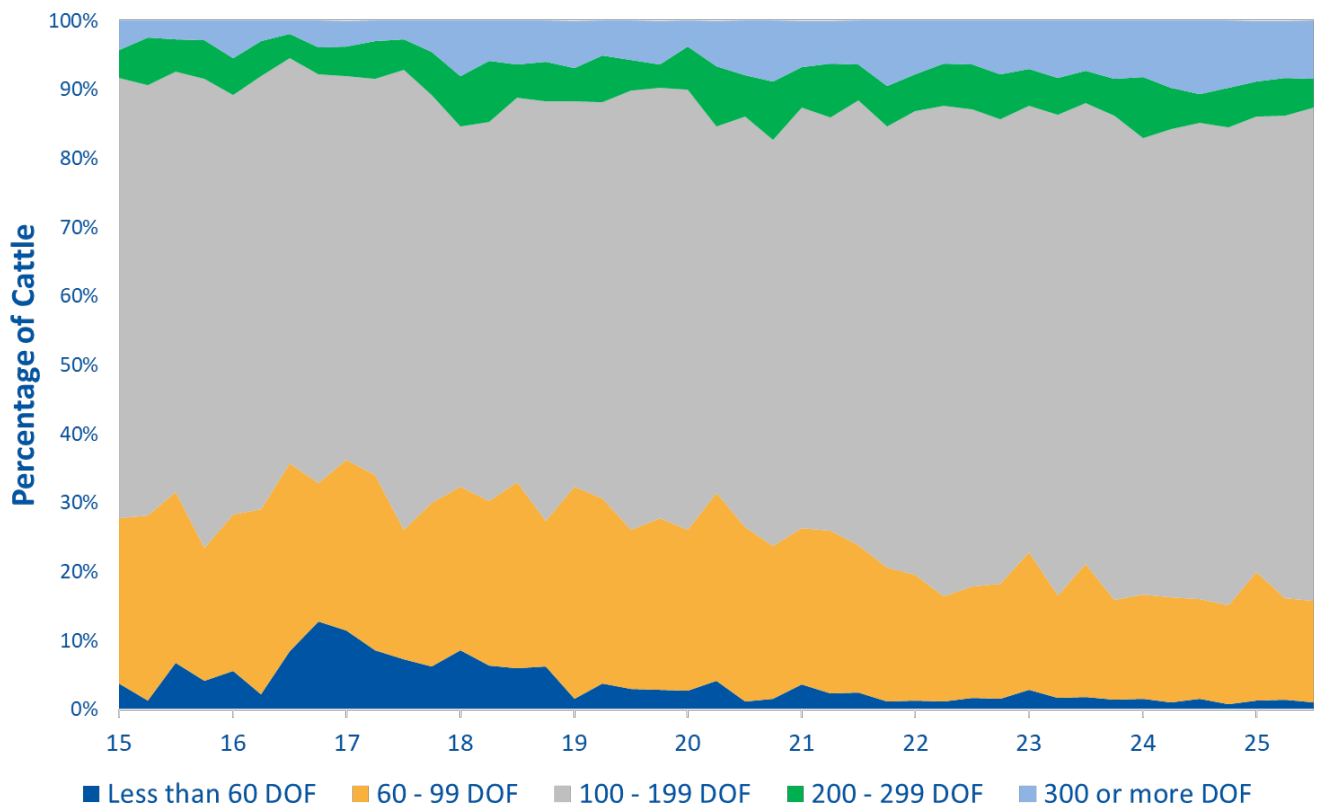
## CATTLE NUMBERS ON FEED - HISTORIC



### QUARTERLY TURNOFF



### QUARTERLY FEEDLOT TURNOFF BY DAYS ON FEED - HISTORIC



	Numbers on Feed Sep 25	Numbers on Feed Jun 25	Numbers on Feed Sep 24
<b>New South Wales</b>			
Less than 500 head	700	571	<b>0</b>
500 - 1000 head	19,841	11,469	<b>10,599</b>
1001 - 10,000 head	117,447	117,680	<b>114,004</b>
over 10,000 head	330,431	342,047	<b>272,739</b>
State Total	<b>468,419</b>	<b>471,767</b>	<b>397,342</b>
<b>Queensland</b>			
Less than 500 head	7,379	10,396	<b>9,902</b>
500 - 1000 head	26,184	25,365	<b>23,971</b>
1001 - 10,000 head	221,616	220,184	<b>202,448</b>
over 10,000 head	629,698	637,335	<b>592,877</b>
State Total	<b>884,877</b>	<b>893,280</b>	<b>829,198</b>
<b>Victoria</b>			
Less than 500 head	0	0	<b>0</b>
500 - 1000 head	0	3,186	<b>2,479</b>
1001 - 10,000 head	25,823	31,221	<b>22,099</b>
over 10,000 head	38,005	37,763	<b>35,184</b>
State Total	<b>63,828</b>	<b>72,170</b>	<b>59,762</b>
<b>South Australia</b>			
Less than 500 head	581	712	<b>0</b>
500 - 1000 head	2,664	3,626	<b>1,699</b>
1001 - 10,000 head	5,570	23,242	<b>26,954</b>
over 10,000 head	46,975	43,492	<b>47,044</b>
State Total	<b>55,790</b>	<b>71,072</b>	<b>75,697</b>
<b>Western Australia</b>			
Less than 500 head	1,917	575	<b>0</b>
500 - 1000 head	1,641	4,308	<b>0</b>
1001 - 10,000 head	24,961	49,657	<b>51,816</b>
over 10,000 head	16,856	16,346	<b>10,577</b>
State Total	<b>45,375</b>	<b>70,886</b>	<b>62,393</b>
<b>Australia</b>			
Less than 500 head	10,577	12,254	<b>9,902</b>
500 - 1000 head	50,330	47,954	<b>38,748</b>
1001 - 10,000 head	395,417	441,984	<b>417,321</b>
over 10,000 head	1,061,965	1,076,983	<b>958,421</b>
Total	<b>1,518,289</b>	<b>1,579,175</b>	<b>1,424,392</b>

*Note: Due to rounding, numbers presented throughout this document may not add up to the total*

**Source:** ALFA/MLA, September 2025, National Accredited Feedlot Survey